

PRODUCED

# CATALOG



# TABLE OF CONTENT

01 Black Boards 2

---

03 Conventional Stands 6

---

05 Flag Stands 8

---

07 Inflatable Displays 14

---

09 L-Stands 16

---

11 Panel Displays 21

---

13 Poster Stands 27

---

15 Roll Up Stands 30

---

17 Table Top Stands 34

---

19 Tents 35

---

21 X-Stands 41

---

02 Cases & Accessories 4

---

04 Crowd Control Barriers 7

---

06 I-Pad Stands 13

---

08 Literature Racks 15

---

10 Outdoor Stands 17

---

12 Poster Frames 23

---

14 Promotion Tables 30

---

16 Standoffs 33

---

18 Table Throws 36

---

20 Trade Show Displays 37

---

22 Yard Signs 43

---

2020 PRODUCT  
CATALOG

# BLACK BOARDS

- > Model#: TBB100
- > Board size: 22" x 31"
- > Double sided
- > Mahogany-finished aluminum frame
- > Can be written on with both chalk and erasable marker



- > Model#: TBB200
- > Board size: 23" x 36"
- > Double sided
- > Solid wood frame
- > Anti-slip rubber feet
- > Can be written on with both chalk and erasable marker

# BLACK BOARDS

- Model#: TBB500
- Board size: 23" x 36"
- Double sided
- Solid wood frame
- Anti-slip rubber feet
- Can be written on with both chalk and erasable marker
- Replaceable Chalkboard



# CASES & ACCESSORIES

- Model#: CGH1& CGH2
- 4" & 4.25" diameter
- Extends up to 50" long
- Made out of PVC



- Model#: CGH55
- 5" diameter
- Extends up to 50" long
- Made out of PVC



- Model#: CGH series
- Made out of aluminum and MDF
- Foam cushion inside
- Available in different sizes



- Model#: CGH-D series
- Includes shoulder strap
- Hard canvas bag
- Available in different sizes



- Model#: CGH-R96-BLK
- PVC hard case with built-in wheel
- Fits most banner stands, pop up displays, etc.
- Nylon web straps and buckles to secure lid to base
- Available in Black color



# CASES & ACCESSORIES

- Model#: CGH-RS-1A
- PVC hard case
- Includes shoulder strap
- Fits our standard roll up stand up to 39" wide



- Model#: CL1/CL2
- Halogen or LED
- For pop up displays



- Model#: CL4/CL5
- Halogen or LED
- For banner stands



- Erasable florescent markers
- Available in dry or wet erase



- High strength, self-adhesive hook and loop
- Easy peel backing liner
- 100% Nylon material
- Simply peel and stick to a clean surface
- Available in Black color only
- 1" wide



# CONVENTIONAL STANDS

## Adjustable Banner Stands



- > Model#: CPH300 series
- > Available sizes: 48" x 36" to 96" x 96" & 64" x 36" to 120" x 96"
- > Telescopic steel poles
- > Adjustable width and height
- > Easy to assemble
- > Comes with a canvas carrying bag

# CROWD CONTROL BARRIERS



- We offer retractable barriers
- Use for managing crowds & queues and advertising
- Graphic printing available
- Belt cassettes are replaceable and printable
- Suitable for airports, cinemas, conferences, tradeshow, cafes, restaurants etc.



# FLAG STANDS



- > Model#: CFS200 series
- > Available size: approximately 7ft high
- > High quality super durable fiberglass pole
- > Variety of bases
- > Unique design to turn in the wind
- > Suitable for both indoor and outdoor
- > Poles come with a canvas carrying bag
- > We also offer a complete package including printing and finishing

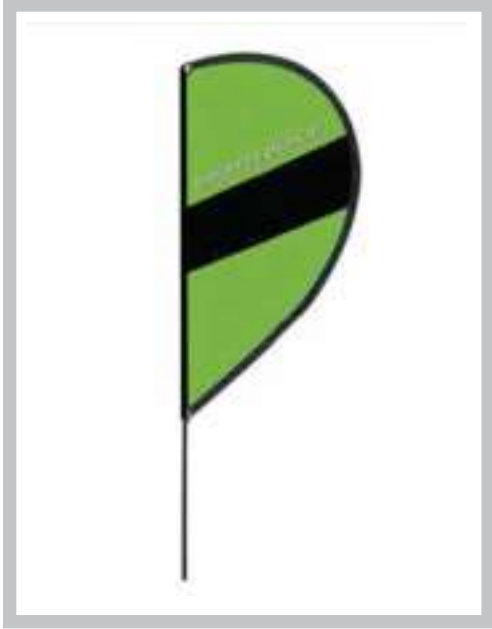
## Tear Drop, Feather & Rectangular Flag Stands



- > Model#: CFS100 series
- > Available size: approximately 7ft, 11ft, and 16ft high
- > High quality super durable fiberglass pole
- > Variety of bases
- > Suitable for both indoor and outdoor
- > Poles come with a canvas carrying bag
- > We also offer a complete package including printing and finishing

# FLAG STANDS

## P-Shape Flag Stands



- Model#: CFS400 series
- Available size: approximately 8ft, 12ft high
- High quality super durable fiberglass pole
- Variety of bases
- Suitable for both indoor and outdoor
- Poles come with a canvas carrying bag
- We also offer a complete package including printing and finishing

# FLAG STANDS

## Fabric A Frames



- > Model#: CFS-A series
- > Available size: approximately 4ft, 6.5ft and 8ft wide
- > High quality foldable frame
- > Suitable for both indoor and outdoor
- > Comes with a carrying bag
- > We also offer a complete package including printing and finishing
- > Ground pegs included

## Backpack Flags



- > Model#: CBF Backpack series
- > Approximately 3.5ft to 4.3ft high
- > High quality super durable fiberglass pole
- > Reinforced backpack with adjustable straps
- > Available shapes: tear drop, feather, rectangular & butterfly
- > We also offer a complete package including printing and finishing

# FLAG STANDS

## Pole banner Hardware



- Model#: CFS-SB series
- Single or side-by-side
- Installs to light or street poles
- Fits 24" wide banner
- Heat-treated cast aluminum
- 24" fiberglass cross arm
- Mounting hardware included



- Model#: CFS-WM-24
- Fits 24" wide banner
- Black powder coated steel
- Wall mount
- Removable knob

# I-PAD STANDS



- Model#: iPad-S1
- Available in Black color
- Fits iPad 2, 3 & 4
- Secure housing with a lock
- Light weight yet stable
- Full 360 rotation ability
- Heavy duty steel base for maximum stability
- Heights 55" when set up
- Tablet not included

# INFLATABLE DISPLAYS



- Free Standing Inflatable Column
- Available sizes: 23.5" x 87" & 23.5" x 118"
- Can be used both indoor and outdoor
- Heavy duty 500 Denier polyester printed shell
- Inflate and deflate in minutes
- No tools required
- Comes with a carrying bag
- One year warrenty against all manufacturer defects

# LITERATURE RACKS



- Model#: CLR200
- Collapsible magazine rack
- 6-pocket
- Made out of aluminum and acrylic
- Heights 56.5" when set up
- Fits 8.5" x 11" literature
- Comes with a canvas bag or an aluminum case



- Model#: CLR400B
- 8-pocket mesh literature rack
- Made out of aluminum frame and fiberglass pole
- Heights 53.5" when set up
- Each pocket measures 9.5" x 12"
- Comes with a canvas bag

# L-STANDS

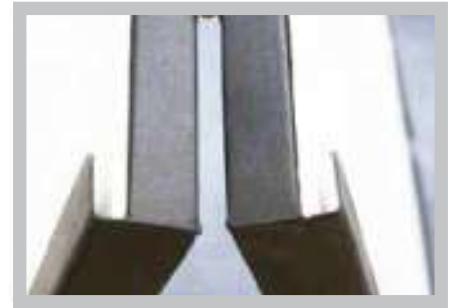


- Model#: CLS300 series
- Graphics sizes: 23.5" x 64", 31.5" x 72" & 35.5" x 80"
- Aluminum construction
- Foldable banner stand
- Clamp bars
- Comes with a canvas carrying bag



# OUTDOOR STANDS

## Metal A Frames



- > Model#: COS100 series
- > Made out of 2cm x 2cm steel tubes
- > Fits 2 sheets of coroplast or sintra
- > Rubber coated handle for extra comfort
- > Weather proof powder coated paint
- > Superior quality metal A Frame
- > Available sizes: 18" x 24", 24" x 18", 22" x 28", 24" x 32", 24" x 36", 24" x 48", 32" x 48", 36" x 48"
- > White color available in 24" x 36"

## Metal Poster Frames



- > Model#: COS110A
- > Made out of steel
- > Fits 1 sheet of 24" x 36" substrate, such as coroplast or sintra
- > Light weight yet stable
- > The poster swings in the wind
- > Weather proof powder coated paint
- > Easy to assemble

# OUTDOOR STANDS

## MDO Sandwich Boards



- Model#: COS-MDO series
- Made out of weather resistant MDO Plywood
- Available sizes: 18" x 24", 24" x 18", 24" x 32", 24" x 36", 24" x 48", 32" x 48"
- We can also custom make any size
- PVC edge cap
- 12" or 16" hinge handle

## Sign Holders

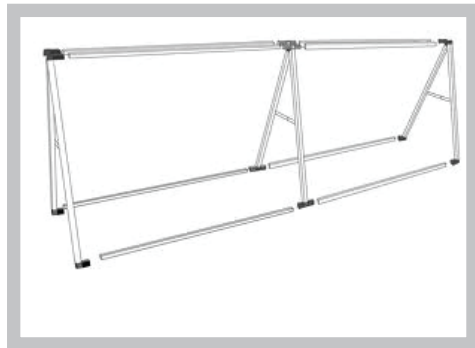


- Model#: COS200A
- Made out of PVC
- Holds up to 36"x48" substrate
- Can be filled with water or sand
- Easy to assemble
- Suitable for both indoor and outdoor use
- Individual units can be joined together

# OUTDOOR STANDS



- > Model#: COS410 series
- > Available poster sizes: 24" x 36" & 24" x 48"
- > Fits 2 substrates, such as coroplast or sintra
- > Plastic tank or "H" base
- > The plastic tank can be filled with water or sand
- > Easy to assemble
- > Suitable for both indoor and outdoor use



- > Model#: COS700-820
- > Graphic size: 80" x 33"
- > Light weight aluminum frame
- > Can be used single-sided or double-sided
- > Can be used as a graphic barrier for events
- > Bungee cords and ground pegs included
- > Comes with a canvas carrying bag

# OUTDOOR STANDS



- Model#: COS800
- Light weight aluminum frame
- Can be used single-sided or double-sided
- Plastic hollow bases for water or sand weighting
- Individual units can be joined together
- Maximum width & height: 3 meters x 2.5 meters
- Comes with canvas carrying bags

# PANEL DISPLAYS



- > Model#: CFP3
- > 3-panel board
- > Double-sided fabric on each board
- > Each panel size: 24" x 30"
- > Fabric area: 21.5" x 27.75"
- > Black aluminum frame
- > Can turn 360 degrees
- > Comes with a canvas carrying bag



- > Model#: CFP4
- > 4-panel board
- > Double-sided fabric on each board
- > Each panel size: 24" x 30"
- > Fabric area: 21.5" x 27.75"
- > Top panel size: 24" x 8"
- > Black aluminum frame
- > Can turn 360 degrees
- > Comes with a canvas carrying bag

# PANEL DISPLAYS



- Model#: CFP6
- 6-panel board
- Double-sided fabric on each board
- Optional small top boards
- Each panel size: 23.5" x 35.5"
- Fabric area: 21.25" x 33.25"
- Top panel size: 23.5" x 8"
- Black aluminum frame
- Can turn 360 degrees
- Comes with a canvas carrying bag

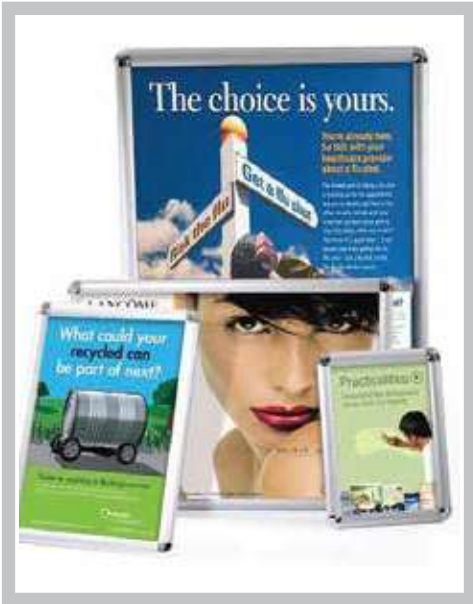


- Model#: CFP8
- 8-panel board
- Double-sided fabric on each board
- Optional small top boards
- Each panel size: 23.5" x 35.5"
- Fabric area: 21.25" x 33.25"
- Top panel size: 23.5" x 8"
- Black aluminum frame
- Can turn 360 degrees
- Comes with a canvas carrying bag

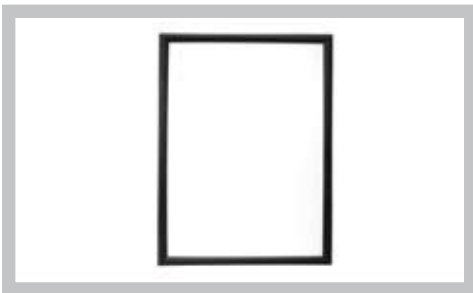


# POSTER FRAMES

## ALuminum Snap Frames



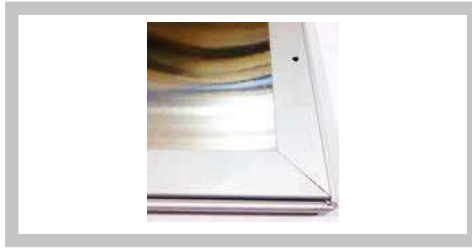
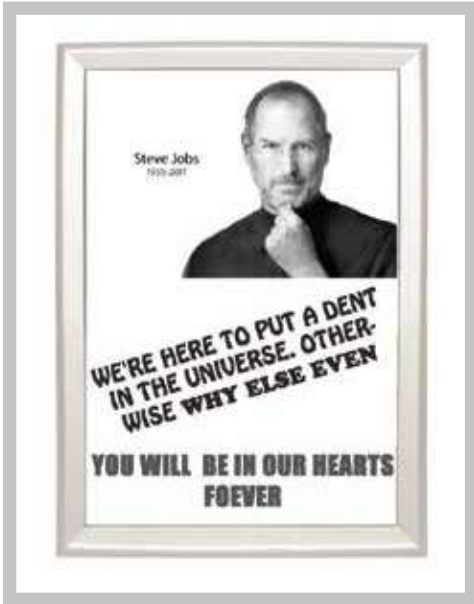
- > Model#: CPF100 series
- > 2.5cm slim aluminum profile
- > Round corner
- > Clear overlay for graphic protection
- > Silver anodized finish
- > Includes screws and drywall plastic anchors
- > PVC backing
- > Available sizes: 8.5"x11", 11"x17", 16.5"x23.5", 22"x28", 24"x30" & 24"x36"



- > Model#: CPF200 series
- > 2.5cm slim aluminum profile
- > Mitered corner
- > Clear overlay for graphic protection
- > Silver anodized finish
- > Black color available in 8.5"x11", 11"x17" & 24"x36"
- > Includes screws and drywall plastic anchors
- > PVC backing
- > Available sizes: 8.5"x11", 11"x17", 18"x24", 16.5"x23.5", 22"x28", 24"x30", 24"x36", 30"x40", 30"x48" & 36"x48"

# POSTER FRAMES

## Outdoor Aluminum Snap Frames



- > Model#: CPF300 series
- > 3.2cm slim aluminum profile
- > Outdoor grade
- > Mitered corner
- > Aluminum backing
- > Clear overlay for graphic protection
- > Silver anodized finish
- > Available with or without lock
- > Includes screws and drywall plastic a
- > Available size: 24" x 36"

## Outdoor Aluminum Poster Frames



- > Model#: CPF400 series
- > Slide-in poster frame
- > Outdoor grade
- > Mitered corner
- > Slim aluminum profile
- > Fits up to 4mm coroplast or sintra sheet
- > Silver anodized finish
- > Single sided
- > Includes screws and drywall plastic anchors



# POSTER FRAMES

## Tension Fabric Poster Frames



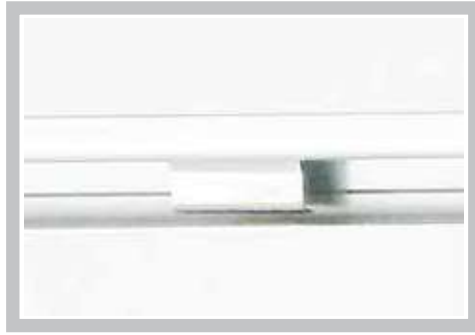
- Model#: CPF-TF series
- Custom made to size
- Silver anodized aluminum frame
- Can be used single or double sided
- Can be freestanding, wall mounted or hung from ceiling
- Clean, simple, and removal of tensioned fabric banner
- High quality dye sublimation printed fabric

## Aluminum Poster Rails



- Model#: CPR1 series
- Available sizes: 2ft, 3ft, 4ft, 5ft, & 6ft
- Custom sizes are also available up to 6ft
- Clamp aluminum bar
- Slide-in hooks
- PVC end caps

# POSTER FRAMES



- > Model#: CPR3 series
- > Available sizes: 2ft, 3ft & 4ft
- > Holds up to 5mm coroplast, sintra, or foam board
- > Slide-in hooks
- > Plastic end caps

## PVC Poster Rails



- > Model#: CPR2 series
- > Available sizes: 2ft, 3ft, 4ft, 5ft & 6ft
- > Custom sizes are also available up to 6ft
- > Clamp PVC bar
- > Slide-in hooks

# POSTER STANDS



- > Model#: CPS100 series
- > Available sizes: 12" x 17" and 22" x 28"
- > Snap aluminum poster frame with chrome plated stand
- > Adjustable height
- > Clear overlay for graphic protection

## Aluminum Sandwich Boards



- > Model#: CPS200 - 1
- > Graphic size: 24" x 34"
- > Snap aluminum poster frame
- > 3.2cm aluminum profile
- > Double-sided
- > Clear overlay for graphic protection
- > Indoor use only

## Easel Stands



- > Model#: CPS400
- > Holds up to 48" x 33" signs
- > Aluminum easel stand
- > Adjustable height
- > Comes with a carrying bag

# POSTER STANDS

## Sign Holders



- > Model#: CPS500
- > Available size: 12", 24", 36" & 48"
- > Made out of steel
- > Includes nuts and bolts
- > Holds up to 1/2" rigid board



- > Model#: CPS600-1117
- > Poster size: 11" x 17"
- > Double sided
- > Black powder coated steel
- > Quick assembly
- > 1/4" deep top-insert slot

# POSTER STANDS



- > Model#: CPS-RS-2228
- > Poster size: 22" x 28"
- > Double sided
- > Black powder coated steel
- > Quick assembly
- > 3/8" deep top-insert slot



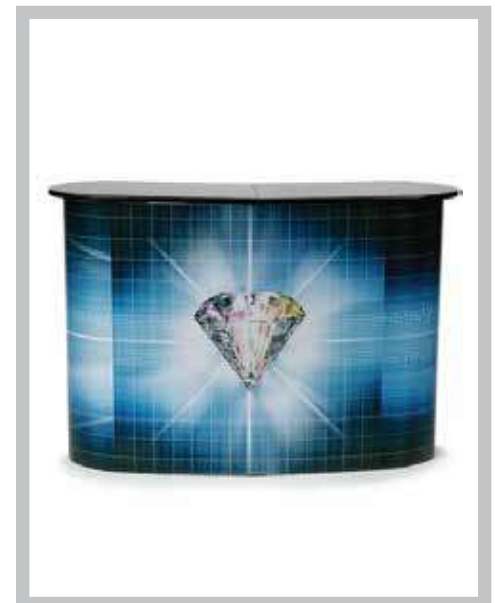
- > Model#: CPS 700-A3-D
- > Graphic Size: 12" x 17"
- > Free standing double sided snap poster frame
- > Clear overlay for graphic protection
- > Silver anodize finish
- > Made out of aluminum
- > Indoor use only



# PROMOTION TABLES



- Model#: CPT100
- Size: approximately 36" x 18" x 81"
- Light weight yet strong and sturdy
- Natural wood finish countertop
- Can be easily dismantled for storage
- Easy to assemble
- Comes with 2 canvas carrying bags



- Model#: CPT300
- Size: approximately 50" x 16" x 35"
- Light weight yet strong and sturdy
- Aluminum pop up frame
- Black countertop
- Can be easily dismantled for storage
- Comes with a canvas carrying bag



# ROLL UP STANDS

## Standard Roll Up Stands



- Model#: CRS100 series
- Available sizes: 23.5" x 77", 28" x 77", 33" x 77", 36" x 77", 39" x 77" & 47" x 77"
- Inter-locking 3-in-1 pole
- Clamp aluminum top bar
- Comes with a padded carrying bag
- Aluminum cartridge roll
- 1-year limited warranty
- Black color available in 33" x 77"

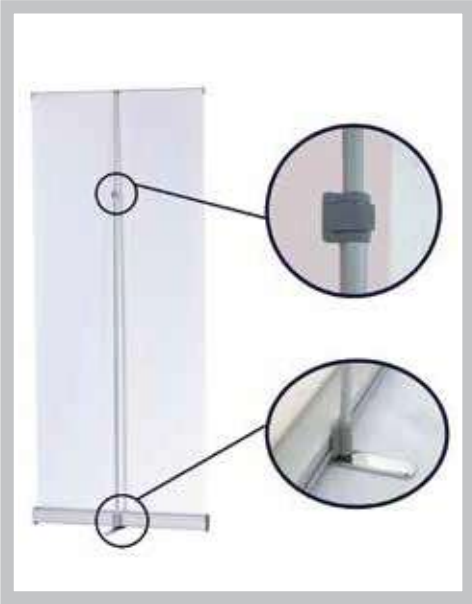
## Standard Double-Sided Roll Up Stands



- Double sided retractable banner stand
- Model#: CRS200A
- Graphic visual size: 33" x 77"
- Inter-locking 3-in-1 pole
- Clamp aluminum top bar
- Comes with a padded carrying bag
- 1-year limited warranty

# ROLL UP STANDS

## Adjustable Roll Up Stands



- > Model#: CRS300A
- > Graphic visual size: 33" wide x 62" to 87" high
- > Aluminum telescopic pole
- > Clamp aluminum top bar
- > Comes with a padded carrying bag
- > 1-year limited warranty

## Deluxe Roll Up Stands



- > Model#: CRS400A
- > Graphic visual size: 33" wide x 39" to 94" high
- > Aluminum telescopic pole
- > Clamp aluminum top bar
- > Replaceable aluminum cartridge
- > Comes with a padded carrying bag
- > Adjustable feet for uneven surfaces
- > 1-year limited warranty



# ROLL UP STANDS

## Premium Roll Up Stands



- > Model#: CRS500 series
- > Available sizes: 23.5" x 79", 28" x 79", 33" x 79", 36" x 79", 39" x 79" & 47" x 79"
- > Inter-locking 3-in-1 pole
- > Clamp aluminum top bar
- > Replaceable aluminum cartridge
- > Paperless graphic installation
- > Comes with a padded carrying bag
- > Adjustable feet for uneven surfaces
- > 1-year limited warranty
- > Black color available in 33" x 79"

## Wide Roll Up Stands



- > Model#: CRS700-60
- > Graphic visual size: 59" x 79.5"
- > Black powder coated
- > Inter-locking 3-in-1 pole
- > High quality aluminum
- > Clamp aluminum top bar
- > Adjustable feet for uneven surfaces
- > Comes with a canvas carrying bag
- > 1-year limited warranty

# STANDOFFS

- Silver Anodized aluminum standoff
- Available sizes: 1.6cm x 2.5cm, 1.9cm x 2.5cm, 1.9cm x 3.5cm, 2.5cm x 2.5cm, 2.5cm x 3.5cm, 3cm x 2.5cm, 3cm x 3.5cm



- Chrome finished aluminum standoff
- Available sizes: 1.3cm x 1.9cm, 1.6cm x 2.5cm, 1.9cm x 2.5cm, 1.9cm x 3.5cm, 2.5cm x 2.5cm, 2.5cm x 3.5cm, 3cm x 2.5cm, 3cm x 3.5cm



- Brushed stainless steel standoff
- Available sizes: 1.2cm x 1.9cm, 1.6cm x 2.5cm, 1.9cm x 2.5cm, 2.5cm x 2.5cm



- Chrome finished edge grip standoff
- Available sizes: 1.9cm x 2.5cm
- Made out of aluminum



- Chrome finished corner grip standoff
- Available sizes: 2.5cm x 2.5cm
- Made out of aluminum



# TABLE TOP STANDS



- Model#: CRS600B-D
- Double Sided
- Graphic visual size: 11.75" x 16.5"
- Lightweight yet stable
- Aluminum Table Top Roll Up Stand



- Model#: CXS500
- Graphic size: 11" x 17"
- Lightweight yet stable
- Made out of PVC



- Model#: CPS300 series
- Available length: 8.25", 11.75", 24" & 36"
- Lightweight yet stable
- Fits 4mm substrate, such as coroplast or foam core
- Made out of aluminum



- Model#: CLS500B
- Graphic size: 11.75" x 16.75"
- Lightweight yet stable
- Made out of aluminum

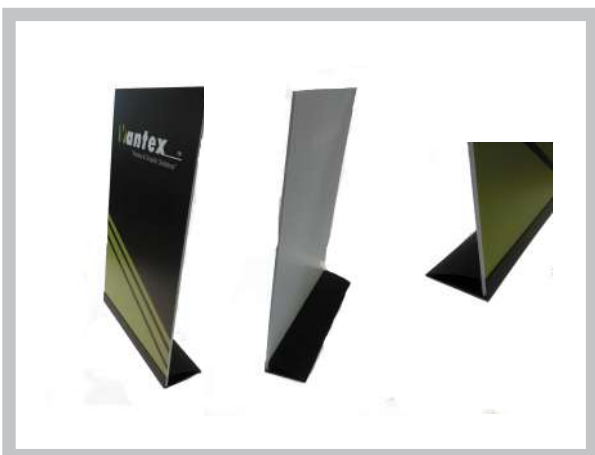
# TABLETOP STANDS



- Model#: CRS-TT-18
- Graphic visual size: 12" x 18" and 18" x 24"
- Aluminum Table Top Roll Up Stand
- Clamp aluminum top bar
- Dark grey plastic end caps
- Comes with a carrying bag



- Model#: CAD-TT series
- Available sizes: 8.5" x 11" & 11" x 17"
- Table top acrylic sign frame
- Posters slide in from the sides
- Viewable from both sides



- Model#: CPS-TT series
- Available length: 8.5", 11" & 24"
- Table top aluminum poster holder
- Black powder coated
- Fits 4mm substrate, such as coroplast or sintra
- Made out of aluminum

# TABLE THROWS



- > For standard 4ft, 6ft & 8ft tables
- > Custom color and sizes also available
- > We offer standard full size, standard open back, fitted full size, fitted open back, stretch, and corner pleated table throws
- > 100% polyester fabric (fire retardant fabric also available on some models)
- > Dye sublimation printing
- > Table runners also available

# TENTS



- > Model#: CCT series
- > Available sizes: 6.5ft x 6.5ft, 10ft x 10ft x 10ft x 15ft & 10ft x 20ft
- > Heavy duty commercial grade corrosion resistant and fully anodized 1.57" diameter hexagon aluminum frames
- > Pull pin slider for quick lock and release
- > 500 denier polyester fire retardant (CAN/ULC-S 109-14) and UV proof tent top
- > Back walls and side skirts are optional
- > Dye sublimation printing
- > Includes a roller bag
- > Optoinal iron weights, sand bags, gutters, multi tent connectors, ground pegs and flag pole holder kits are also available

# TRADE SHOWS DISPLAYS

## Hanging Display Systems



- Model#: CHD series
- Different shapes and sizes available
- Design to suspend from ceilings to create high visual impact
- Can be suspended one within another
- Lightweight framework that clicks together effortlessly
- Aluminum tube frames that are durable and interchangeable
- Seamless pillow case mounting stretch fabric with industrial zipper
- High quality dye sublimation printed fabric
- No tools required
- 5-year limited warranty on frames
- Frames come with a bag
- Our fabric meets CAN/ULC S109-14 & NFPA 701 standards for fire safety

# TRADE SHOWS DISPLAYS

## Tension Fabric Pop Up Displays



- Model#: CPD200 series
- Available size: 90" x 90" and 119.25" x 90"
- Quick assembly within 10 minutes
- Matte finished aluminum frames
- Seamless wrinkle free stretch fabric
- Comes with two halogen lights and a hard case
- Lightweight yet stable
- 10-year limited warranty on frames
- 5ft table top version also available
- Our fabric meets CAN/ULC S109-14 & NFPA 701 standards for fire safety



# TRADE SHOWS DISPLAYS

## Premium Pop Up Displays



- Model#: CPD100 series
- Available size: 8ft x 8ft and 10ft x 8ft
- Self-locking matte finished aluminum frames
- Quick assembly within 10 minutes
- Magnetic channel bars
- Lightweight yet stable
- 10-year limited warranty on frames
- Comes with 2 halogen lights and a podium hard case

## Tension Fabric Systems

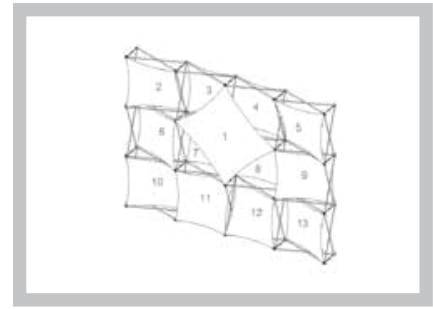


- Model#: CTF series
- Available in curve, straight, and S shape
- Available in many different sizes
- 1 1/4" snap tube aluminum frames attached with a bungee cord for ease of assembly
- Comes with a carrying bag
- Seamless pillow case mounting stretch fabric with industrial zipper
- 5-year limited warranty on frames
- Lights and cases are optional
- 6ft and 8ft table top version also available
- Our fabric meets CAN/ULC S109-14 & NFPA 701 standards for fire safety



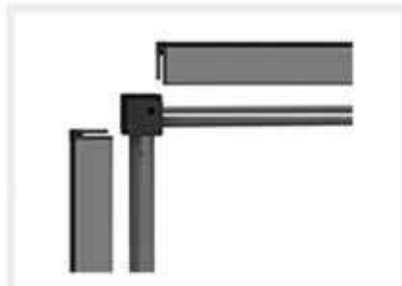
# TRADE SHOWS DISPLAYS

## Geometric-shaped PopUp Displays



- > Model#: CPD300 series
- > Available size: 87" x 87" and 115.5" x 87"
- > Self-locking aluminum frames
- > 10-year limited warranty on frames
- > Stretch polyester fabric prints
- > Multiple looks within one display
- > Comes with 2 halogen lights and a hard case

## Rubber-edge Tension Fabric Displays



- > Model#: CPD-SEG series
- > Available size: 87.5" x 87.5" and 116" x 87.5"
- > Self-locking aluminum frames
- > Quick assembly within 10 minutes
- > Seamless wrinkle free stretch fabric
- > Rubber edge fabric
- > Borderless exhibition structure
- > 10-year limited warranty on frames
- > Comes with 2 halogen lights and a hard case

# X-STANDS

## Standard X-stands



- > Model#: CXS200 series
- > Graphic sizes: 24" x 64", 28" x 72" & 34" x 76"
- > Fiberglass pole and metal construction
- > Foldable banner stand
- > Designed for a banner with grommets in each corner
- > Comes with a nylon carrying bag

## Economy X-stands



- > Model#: CXS300 series
- > Graphic sizes: 24" x 64" & 28" x 72"
- > Complete fiberglass pole construction
- > Foldable banner stand
- > Designed for a banner with grommets in each corner
- > Comes with a nylon carrying bag

# X-STANDS

## Adjustable X-stands



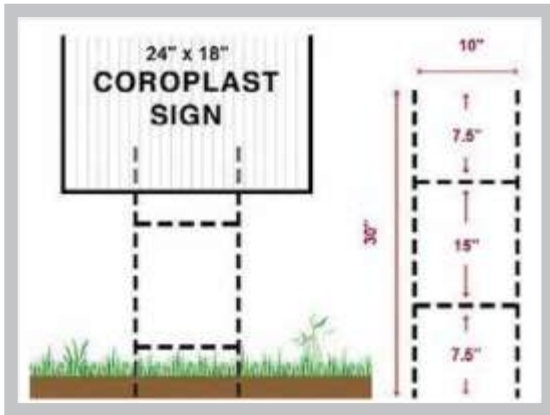
- > Model#: CXS400B
- > Graphic size: 24" x 72" up to 34" x 78"
- > Fiberglass pole and aluminum construction
- > Foldable banner stand
- > Designed for a banner with grommets in each corner
- > Adjustable arm poles
- > Comes with a canvas carrying bag

## Bamboo X-stands



- > Model#: CXS-BB series
- > Graphic sizes: 24" x 64" & 24" x 72"
- > Made out of bamboo
- > Foldable banner stand
- > Designed for a banner with grommets in each corner
- > Comes with a canvas carrying bag

# YARD SIGNS



- > H-wire step stakes
- > Available size: 10" x 30"
- > 9 guage galvanized wire